

AG-MI-2014-03-B-EN – Pre-Rotator Bendix Gear

Category **B**

EFFECTIVE DATE

16.07.2014

SUPERSEDES/REPLACES

N/A (initial issue)

APPLICABILITY

MTOsport, Calidus and Cavalon before Date of Manufacture (DOM) 2014

COMPLIANCE

To be performed within the next maintenance event.

BACKGROUND

The analysis of Incident Reporting Forms resulted in an accumulation of interferences caused by the pre-rotator bendix gear.

RISK OF NEGLECT

Failure to comply with this instruction/information will result in

- possible damage to the aircraft
- loss of related warranty

SCOPE OF WORK

Inspect configuration state of bendix shaft and replace with improved version, if required.

AFFECTED AREAS

N/A

SPECIAL TOOLS & CONSUMABLE MATERIALS

AG-BAS-04 Loctite 638 green (S.VB6013)

PARTS

M.RK67.06.13	Bendix Shaft (MTOsport)
M.RK67.06.09	Bearing 6200 ZZNR (Bendix top side / MTOsport)
C.RK40.25.13	Bendix Shaft (Calidus)
C.RK40.25.04	Bearing 6200 ZZNR (Bendix top side / Calidus)
V.RK208.12.13	Bendix Shaft (Cavalon)
V.RK208.12.04	Bearing 6200 ZZNR (Bendix top side / Cavalon)

Contact & Info:

airworthiness@auto-gyro.com
www.auto-gyro.com

AutoGyro GmbH
Dornierstr. 14
31137 Hildesheim

LABOR AND REQUIREMENTS

To inspect 0.1 h

To accomplish 0.5 h

Task may only be performed by an organization or individual trained and entitled to do 'Heavy Maintenance'!

SUPPORT POLICY

Bendix shaft and bearing f.o.c. (reimbursement upon receipt of affected bendix shaft and / or bearing).

REFERENCES

Manufacturer Maintenance Manual (MMM) in latest revision.

62-31-00 5-1 – Check-Adjustment: Rotor Head Main Bolt Axis

DOCUMENTATION

The accomplishment of this Manufacturer Information, or the decision of its rejection, must be properly documented, if such procedure is required by the relevant authority.

Warnings Caution and Notes

This instruction uses **WARNINGS**, **CAUTIONs** and **NOTEs** in bold italic letters to indicate especially critical and important instructions. The call-outs appear at the top of the Maintenance Job Card if of general nature or applicable for the complete task, or will directly precede the individual Work Step.

The meaning of each call-out is defined below:

WARNING: A warning means that the neglect of the appropriate procedure or condition could result in personal injury or fatal accidents.

CAUTION: A caution means that the neglect of the appropriate procedure or condition could result in damage to or destruction of equipment.

NOTE: A note stresses the attention for a special circumstance, which is essential to emphasize.

Category Codes

- A** Safety critical - failure to comply may result in a significant reduction of flight safety, injury or death
- B** Important - failure to comply may result in reduced safety margin, injury and/or equipment damage
- C** Beneficial - improves operating behaviour, reliability and/or maintainability

COMPLIANCE PROCEDURE

GENERAL, REFERENCES AND REQUIREMENTS

Task may only be performed by an organization trained and entitled to do 'Heavy Maintenance'!

Secure gyroplane against unauthorized or unintended operation!

Gyroplane must be placed on level ground and restrained (blocks, chocks)

SPECIAL TOOLS, CONSUMABLE MATERIALS AND PARTS

AG-BAS-04 Loctite 638 green (S.VB6013)

PRECAUTIONS AND SAFETY MEASURES

PROCEDURES

- 1 Inspect wear pattern and gear mesh of pre-rotator upper engagement.
- 2 If the wear pattern is uneven (see Fig. 1 / eg due to dynamic skew), the position of the bendix shaft must be inspected. Remove lower bearing and ensure that the shaft is, in free load condition, centrally positioned in the bearing seating. If free play in the upper bearing is present, the following must be carried out:
- 3 **Free play through bearing abrasion:**
Replace upper bearing and glue bendix shaft with Loctite 638 (high strength / AG-BAS-04) into the upper bearing. Reassemble lower bearing.
- 4 **Play through abrasion of the bendix shaft from ball bearing inner ring:**
Glue bendix shaft with Loctite 638 (high strength / AG-BAS-04) into upper bearing. Reassemble lower bearing. If free play is greater than 1/10 mm, then replace bendix shaft with new part and glue new part with Loctite 638 (high strength / AG-BAS-04) into upper bearing. Reassemble lower bearing.
- 5 If in doubt, contact AutoGyro customer support.
- 6 Grease with AG-GRS-01.

PARTS LIST

Fig.	Pos.	Description	PC PIT	Remark
1		Bendix Shaft (MTOsport)	L2 M.RK67.06.13	
2		Bearing 6200 ZZNR (Bendix top side)	L2 M.RK67.06.09	
3		Bendix Shaft (Calidus)	L2 C.RK40.25.13	
4		Bearing 6200 ZZNR (Bendix top side)	L2 C.RK40.25.04	
5		Bendix Shaft (Cavalon)	L2 V.RK208.12.13	
6		Bearing 6200 ZZNR (Bendix top side)	L2 V.RK208.12.04	

ILLUSTRATIONS

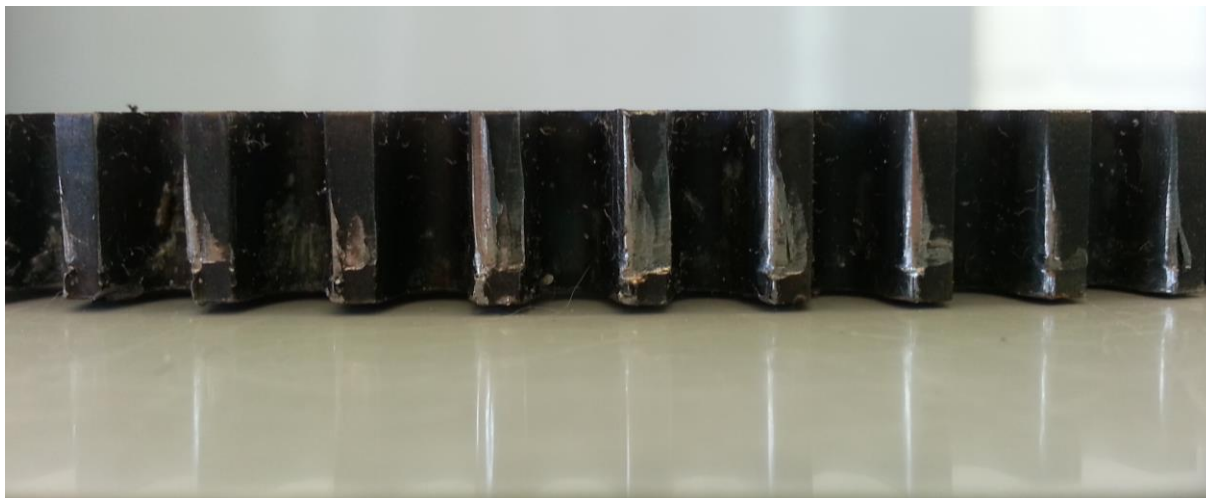


Fig. 1 - Wear Pattern (uneven)